

Article

Approximation of Gaussian Curvature by the Angular Defect: An Error Analysis

Marie-Sophie Hartig ^{1,2} 

- ¹ Max Planck Institute for Gravitational Physics (Albert Einstein Institute) and Institute for Gravitational Physics, Leibniz University Hannover, Callinstrasse 38, 30167 Hannover, Germany; marie-sophie.hartig@aei.mpg.de
- ² Institute for Mathematics, Friedrich Schiller University Jena, Fürstengraben 1, 07743 Jena, Germany

Abstract: It is common practice in science and engineering to approximate smooth surfaces and their geometric properties by using triangle meshes with vertices on the surface. Here, we study the approximation of the Gaussian curvature through the Gauss–Bonnet scheme. In this scheme, the Gaussian curvature at a vertex on the surface is approximated by the quotient of the angular defect and the area of the Voronoi region. The Voronoi region is the subset of the mesh that contains all points that are closer to the vertex than to any other vertex. Numerical error analyses suggest that the Gauss–Bonnet scheme always converges with quadratic convergence speed. However, the general validity of this conclusion remains uncertain. We perform an analytical error analysis on the Gauss–Bonnet scheme. Under certain conditions on the mesh, we derive the convergence speed of the Gauss–Bonnet scheme as a function of the maximal distance between the vertices. We show that the conditions are sufficient and necessary for a linear convergence speed. For the special case of locally spherical surfaces, we find a better convergence speed under weaker conditions. Furthermore, our analysis shows that the Gauss–Bonnet scheme, while generally efficient and effective, can give erroneous results in some specific cases.



Citation: Hartig, M.-S. Approximation of Gaussian Curvature by the Angular Defect: An Error Analysis. *Math. Comput. Appl.* **2021**, *26*, 15. <https://doi.org/10.3390/mca26010015>

Received: 21 December 2020
Accepted: 8 February 2021
Published: 9 February 2021

Publisher’s Note: MDPI stays neutral with regard to jurisdictional claims in published maps and institutional affiliations.



Copyright: © 2021 by the author. Licensee MDPI, Basel, Switzerland. This article is an open access article distributed under the terms and conditions of the Creative Commons Attribution (CC BY) license (<https://creativecommons.org/licenses/by/4.0/>).

Keywords: smooth surfaces; meshes; curvatures; error analysis; Gauss–Bonnet scheme; Voronoi region

1. Introduction

Many applications in science and engineering use discrete point sets for the approximation of surfaces of three-dimensional objects. A key challenge that subsequently arises is estimating the curvature of these surfaces given the mesh of surface data points. Hence, a fast and accurate approximation method is frequently desired. In this work, we address the common Gauss–Bonnet scheme, which is also called angular deficit scheme, for approximating the Gaussian curvature of smooth surfaces. The scheme is formula based and, hence, exhibits a fast computation time [1]. In addition, upon numerical analysis and a comparison with four other popular approaches, it is suggested to be the best-suited algorithm for the Gaussian curvature [2]. Other approaches include curve-fitting techniques and the methods by Watanabe and Belyaev [3] and Taubin [4]. An overview of common methods for the approximation of the Gaussian curvature, but also other surface curvature definitions, is given in [5].

Given a triangle mesh spanned by the surface data points, the Gauss–Bonnet scheme determines the Gaussian curvature by dividing the angular defect in a vertex p through a suitable area. Common choices for this area are either one-third of the areas of the attached triangles or the area closer to p than to the other vertices. We investigate here the latter, known as the Voronoi region. There are many ways to define the accuracy or goodness of this approximation. We parametrize the estimation error in terms of the maximum length of any edge in the star of p . While the Gauss–Bonnet scheme is highly accurate in various examples and even shows a quadratic convergence speed in numerical investigations [1,2,6], an analytic error analysis is rare. For a regular set of data points,

an analysis was done by [7–9]. Xu [8] also proved the convergence of the scheme under weaker assumptions. However, it has been observed that the convergence depends on the uniformity of the mesh [2,7]. We will support these findings by showing that a control of the mesh is necessary for ensuring a convergence of the scheme.

This paper builds on the work of Borrelli, Cazals, and Morvan [6] and performs an error analysis based on the convergence of the angles of Euclidean triangles towards the angles of geodesic triangles with the same vertices. We define conditions on the data points of a smooth surface that are sufficient and also necessary for the convergence of the scheme. We first control the angles of the Euclidean triangles and, second, their relative edge lengths. For these cases, we prove a linear convergence speed of the scheme. Furthermore, we improve the estimation of the convergence speed for locally spherical surfaces. By this, we conclude that the Gauss–Bonnet scheme provides a good approximation of the Gaussian curvature if one controls the mesh, but suffers from a possible high inaccuracy otherwise.

In our work, we first define in Section 2 some background notations and give in Section 3 a brief reminder of the Gauss–Bonnet scheme. In Section 4, we summarize the preliminary work and evaluate our new estimations for acute triangles, triangles with preconditioned edge lengths, and the special case of locally spherical surfaces.

2. Basic Notations

We adapt the notations used in [6], which we briefly recall in this section. See [10] for more details concerning the fundamental differential geometry of surfaces.

Let S be a smooth surface in \mathbb{R}^3 and let p be a point of S . Let $\{p_i\}_{i=1,\dots,n} \subset S$ be the set of the one-ring neighbor points of p , i.e., the numbered direct neighbor points. Their position with respect to p is defined by the polar angles φ_i and θ_i . The surface normal vector in p , \vec{n} , and \vec{pp}_i span a plane Π_i . Hence, it is oriented by the angle φ_i with respect to the coordinate system (see Figure 1). The angle between Π_i and Π_{i+1} is denoted by $\tilde{\gamma}_i$, i.e., $\tilde{\gamma}_i = \varphi_{i+1} - \varphi_i$. Adding these angles up, we describe a full round trip and, hence, $\sum_i \tilde{\gamma}_i = 2\pi$. We write λ_i for the curvature of the plane curve $\Pi_i \cap S$ in p .

The Gauss–Bonnet scheme requires the approximation of S by a set of triangles, i.e., the mesh, whose vertices are defined through the given data points. Then, the set $\{pp_i pp_{i+1}\}_{i=1,\dots,n}$, $p_{n+1} = p_1$, of n Euclidean triangles forms a piecewise linear approximation of S around p . For each triangle, let γ_i denote the angle $\angle pp_i pp_{i+1}$ and η_i the Euclidean distance between p and p_i (see Figure 2). Note that, in general, $\gamma_i \neq \tilde{\gamma}_i$, and hence, $\sum_i \gamma_i \neq \sum_i \tilde{\gamma}_i = 2\pi$. The difference $\epsilon = 2\pi - \sum_i \gamma_i$ is called the angular defect at p .

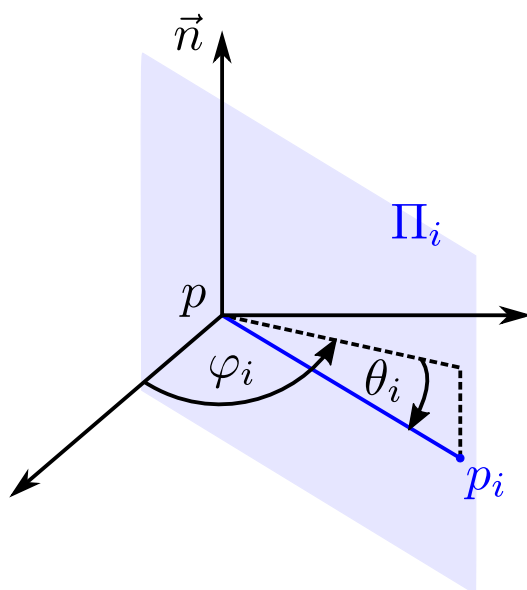


Figure 1. Definition of point p_i in spherical coordinates and the position of the plane Π_i in relation to p and p_i . Thereby, the angle φ_i describes the tilt of the plain Π_i around the normal vector \vec{n} and the position of the point p_i in to the plain spanned by the other two axes of the coordinate system. The angle θ_i defines the position of p_i with respect to the latter plain.

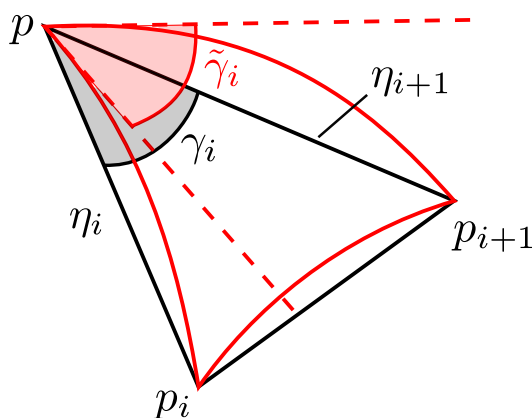


Figure 2. Description of the Euclidean and geodesic triangles $\{pp_i p_{i+1}\}$. The points p_i and p_{i+1} belong to the one-ring neighbor points of p . Their Euclidean distance to p is given by η_i and η_{i+1} .

3. The Gauss–Bonnet Scheme

The central quantity we address in this paper is the Gaussian curvature k_G . It is defined as the product of the principal curvatures k_M (maximum normal curvature) and k_m (minimum normal curvature), $k_G = k_M \cdot k_m$ [10]. The angular defect in a surface point divided by a suitable area provides a good approximation of the Gaussian curvature. This can be motivated as follows: In the case of triangulated surfaces, the Gauss–Bonnet theorem [10] is reduced to

$$\iint_R k_G \, dA = 2\pi - \sum_i \gamma_i, \tag{1}$$

where R denotes an appropriate region of the mesh around p with a piecewise linear boundary. We take the surface integral over k_G [1]. Assuming k_G to be constant in R , we rewrite (1) as

$$k_G = \frac{2\pi - \sum_i \gamma_i}{A_R}, \tag{2}$$

with A_R area of R . In the literature, the region R is often selected as a third of the area of the triangles $\{p_i p p_{i+1}\}$ [7,9]. Another popular choice of R is the region of the mesh that is

closer to p than to its neighbors p_i . This region is called the Voronoi region or the module of the mesh at p , and can be computed as follows:

$$S_p = \sum_i \frac{1}{4 \sin \gamma_i} \left(\eta_i \eta_{i+1} - \frac{\cos \gamma_i}{2} (\eta_i^2 + \eta_{i+1}^2) \right) \geq 0. \tag{3}$$

Plugging this into Equation (2), we get

$$k_G = \frac{2\pi - \sum_i \gamma_i}{S_p}. \tag{4}$$

In the following, we refer to (4) as the Gauss–Bonnet scheme.

Note that the summands of (3) are not necessarily greater than zero. This condition is automatically fulfilled for acute triangles. Let α_i and β_i be the angles of the Euclidean triangles $\{p_i p p_{i+1}\}$ that are attached to the vertex points p_i and p_{i+1} , i.e., $\alpha_i = \angle p p_i p_{i+1}$ and $\beta_i = \angle p_i p_{i+1} p$. Applying the laws of sines and cosines, we can rewrite (3) as

$$\begin{aligned} S_p &= \sum_i \frac{1}{4 \sin \gamma_i} \left(\eta_i \eta_{i+1} - \frac{\cos \gamma_i}{2} (\eta_i^2 + \eta_{i+1}^2) \right) \\ &= \frac{1}{8} \sum_i \eta_i^2 \frac{\eta_{i+1} - \eta_i \cos \gamma_i}{\eta_i \sin \gamma_i} + \eta_{i+1}^2 \frac{\eta_i - \eta_{i+1} \cos \gamma_i}{\eta_{i+1} \sin \gamma_i} \\ &= \frac{1}{8} \sum_i \eta_i^2 \cot \beta_i + \eta_{i+1}^2 \cot \alpha_i \\ &= \frac{1}{8} \sum_i \eta_i^2 (\cot \beta_i + \cot \alpha_{i-1}). \end{aligned} \tag{5}$$

Here, α_{i-1} and β_i denote the angles opposite to the edge of length η_i . Although this equation describes the Voronoi region only for acute triangles, it is more commonly used in the literature, and [1,8,11] build their error analysis on it.

Our work refers to their results of Borrelli, Cazals, and Morvan [6], who evaluate the approximation of the Gaussian curvature (4) in a different way. We discuss their approach in the next section.

4. Error Analysis

We want to estimate the convergence speed of the Gauss–Bonnet scheme. While numerical error analysis indicates that this scheme has a quadratic convergence speed [6], an analytical error analysis has only been performed for special cases [6–9]. One analytical approach is given by Borrelli, Cazals, and Morvan in [6]. They evaluate an upper limit for the Gauss–Bonnet scheme depending on the differences between the principal curvatures k_M and k_m . Building on their work, we determine conditions on the data points for a convergence of the Gauss–Bonnet scheme and prove that the convergence speed is faster for locally spherical surfaces. Special attention is devoted to the absolute value of S_p that must be non-zero.

4.1. Preliminary Work

Before we can state and prove our theorems, we need some preliminary work. For convenience, we report the relevant material from [6] without proofs, thus making our exposition self-contained.

Let c be a C^∞ smooth regular curve and let p be a point in c . Then, we can represent c locally with the graph $(x, f(x))$ of a smooth function f , such that $p = (0, 0)$ and the tangent to c is aligned with the x -axis. With $k = f''(0)$ and $v = f'''(0)$, we have, near the origin,

$$f(x) = \frac{kx^2}{2} + \frac{vx^3}{6} + o(x^3). \tag{6}$$

In order to approximate the curvature of c in p , we use polar coordinates $x = \eta \cos \theta$, $y = \eta \sin \theta$ and evaluate an expression of θ as a function of η .

Proposition 1. Let $f(x)$ be a C^∞ smooth regular function with $k = f''(0)$ and $v = f'''(0)$. For a point $p = (\eta \cos \theta, \eta \sin \theta)$ on the graph of f , near the origin, one has

$$\theta = \frac{k\eta}{2} + \frac{v\eta^2}{6} + o(\eta^2) \quad \text{if } x \geq 0, \tag{7}$$

$$\theta = \frac{k\eta}{2} - \frac{v\eta^2}{6} + o(\eta^2) \quad \text{if } x \leq 0. \tag{8}$$

Moreover, we will make use of a dependency relationship between $\tilde{\gamma}_i$, γ_i , η_i , and η_{i+1} . Therefore, we consider fixed normal sections Π_i .

Proposition 2. Let $\bar{\eta} = \max(\eta_i, \eta_{i+1})$. Define the following sum and product functions:

$$s(\eta_i, \eta_{i+1}) = \frac{\lambda_i^2 \eta_i^2 + \lambda_{i+1}^2 \eta_{i+1}^2}{8}, \quad p(\eta_i, \eta_{i+1}) = \frac{\lambda_i \lambda_{i+1} \eta_i \eta_{i+1}}{4}.$$

The $\tilde{\gamma}_i$, γ_i , η_i , and η_{i+1} quantities satisfy

$$\tilde{\gamma}_i = \gamma_i + \frac{p(\eta_i, \eta_{i+1})}{\sin \gamma_i} - s(\eta_i, \eta_{i+1}) \cot \gamma_i + o(\bar{\eta}^2), \tag{9}$$

$$\gamma_i = \tilde{\gamma}_i + \frac{p(\eta_i, \eta_{i+1})}{\sin \tilde{\gamma}_i} - s(\eta_i, \eta_{i+1}) \cot \tilde{\gamma}_i + o(\bar{\eta}^2). \tag{10}$$

For convenience, we define the following auxiliary functions.

Definition 1. Consider the one-ring neighbors of p . For the sake of conciseness, let $c_i = \cos \varphi_i$, $s_i = \sin \varphi_i$, and define the following quantities:

$$A_i = \frac{1}{4 \sin \gamma_i} \left[\eta_i \eta_{i+1} (c_i^2 s_{i+1}^2 + s_i^2 c_{i+1}^2) - \frac{\cos \gamma_i}{2} (\eta_i^2 (2c_i^2 s_i^2) + \eta_{i+1}^2 (2c_{i+1}^2 s_{i+1}^2)) \right], \tag{11}$$

$$B_i = \frac{1}{4 \sin \gamma_i} \left[\eta_i \eta_{i+1} (c_i^2 c_{i+1}^2) - \frac{\cos \gamma_i}{2} (\eta_i^2 c_i^4 + \eta_{i+1}^2 c_{i+1}^4) \right], \tag{12}$$

$$C_i = \frac{1}{4 \sin \gamma_i} \left[\eta_i \eta_{i+1} (s_i^2 s_{i+1}^2) - \frac{\cos \gamma_i}{2} (\eta_i^2 s_i^4 + \eta_{i+1}^2 s_{i+1}^4) \right]. \tag{13}$$

Thus, $S_p = A + B + C$ with $A = \sum_i A_i$, $B = \sum_i B_i$, and $C = \sum_i C_i$.

It can be shown that the Voronoi region S_p is independent on the angles φ_i (see [6]).

Using this, we can now formulate the relevant proposition of this work. Stating that the angular defect is a homogeneous polynomial of degree two in the principal curvatures, Proposition 3 will be used throughout the following proofs.

Proposition 3. Let $\bar{\eta} = \sup_i \eta_i$. The angular defect and the principal curvatures satisfy

$$2\pi - \sum_i \gamma_i = (Ak_G + Bk_M^2 + Ck_m^2) + o(\bar{\eta}^2). \tag{14}$$

Based on this preliminary work, we present our main results in the next subsections.

4.2. Acute Triangles

The subsequent Theorem 1 provides an upper bound for the discrepancy between the Gauss–Bonnet scheme (4) and the Gaussian curvature for acute triangles. It easily can be shown that the Voronoi region S_p is greater than zero under these conditions.

Theorem 1. Let T_m be a sequence of meshes on a smooth surface with p as a common vertex. Consider the one-ring around p . Let $\bar{\eta}_m = \sup_i \eta_{m_i}$, $\underline{\eta}_m = \inf_i \eta_{m_i}$. Suppose that:

1. There exists a positive constant γ_{min} such that $\forall i, \forall m, 0 < \gamma_{min} \leq \gamma_{m_i} \leq \pi/2$.
2. There exist two positive constants η_1, η_2 such that $\forall m, \eta_1 \leq \bar{\eta}_m / \underline{\eta}_m \leq \eta_2$.

For $k_M \neq k_m$, there exists a positive constant C such that

$$\limsup_m \left| \frac{2\pi - \sum_i \gamma_{m_i}}{S_{p_m}} - k_G \right| \leq C [(k_M - k_m)^2 + |k_M^2 - k_m^2|]. \tag{15}$$

C depends on the angle γ_{min} and the length ratio η_2 , which are constant and given through the sequence of meshes.

For $k_M = k_m$, it is

$$\limsup_m \left| \frac{2\pi - \sum_i \gamma_{m_i}}{S_{p_m}} - k_G \right| \leq o(1). \tag{16}$$

Proof. Here, we evaluate the given inequalities on the basis of the proof in [6] and provide an indication of how to estimate C . It is sufficient to give the proof for a particular mesh in the sequence. For the sake of clarity, we omit its index m . Using Proposition 3, we first estimate the difference $|2\pi - \sum_i \gamma_i - S_p k_G|$.

$$\begin{aligned} \left| 2\pi - \sum_i \gamma_i - S_p k_G \right| &= \left| 2\pi - \sum_i \gamma_i - (A + B + C) k_G \right| \\ &= \left| B (k_M^2 - k_G) + C (k_m^2 - k_G) \right| + o(\bar{\eta}^2) \\ &= \left| \frac{B + C}{2} (k_M - k_m)^2 + \frac{B - C}{2} (k_M^2 - k_m^2) \right| + o(\bar{\eta}^2) \\ &\leq \left| \frac{B + C}{2} \right| (k_M - k_m)^2 + \left| \frac{B - C}{2} \right| |k_M^2 - k_m^2| + o(\bar{\eta}^2) \end{aligned} \tag{17}$$

To express the inequality (17) in terms of $\bar{\eta}$ and γ_{min} , we have to find upper and lower bounds for the auxiliary functions B and C . For acute triangles, i.e., $\gamma_i \in (0, \pi/2)$, one has $\cos \gamma_i > 0$. Hence, with $c_i = \cos \varphi_i$, we have

$$\begin{aligned} B_i &= \frac{1}{4 \sin \gamma_i} \left[\eta_i \eta_{i+1} c_i^2 c_{i+1}^2 - \frac{\cos \gamma_i}{2} (\eta_i^2 c_i^4 + \eta_{i+1}^2 c_{i+1}^4) \right] \\ &= \frac{1}{4 \sin \gamma_i} \left[(1 - \cos \gamma_i) \eta_i \eta_{i+1} c_i^2 c_{i+1}^2 - \frac{\cos \gamma_i}{2} (\eta_i c_i^2 - \eta_{i+1} c_{i+1}^2)^2 \right] \\ &\leq \frac{1}{4 \sin \gamma_i} (1 - \cos \gamma_i) \eta_i \eta_{i+1} c_i^2 c_{i+1}^2 \\ &\leq \frac{(1 - \cos \gamma_i)}{4 \sin \gamma_i} \bar{\eta}^2. \end{aligned} \tag{18}$$

Therefore,

$$B = \sum_{i=1}^n B_i \leq \sum_{i=1}^n \frac{(1 - \cos \gamma_i)}{4 \sin \gamma_i} \bar{\eta}^2 < \sum_{i=1}^n \frac{\bar{\eta}^2}{4 \sin \gamma_{min}} = \frac{n \bar{\eta}^2}{4 \sin \gamma_{min}}. \tag{19}$$

Similarly, we find the lower bound of B .

$$\begin{aligned}
 B_i &= \frac{1}{4 \sin \gamma_i} \left[\eta_i \eta_{i+1} c_i^2 c_{i+1}^2 - \frac{\cos \gamma_i}{2} (\eta_i^2 c_i^4 + \eta_{i+1}^2 c_{i+1}^4) \right] \\
 &= \frac{1}{4 \sin \gamma_i} \left[(1 - \cos \gamma_i) \eta_i \eta_{i+1} c_i^2 c_{i+1}^2 - \frac{\cos \gamma_i}{2} (\eta_i c_i^2 - \eta_{i+1} c_{i+1}^2)^2 \right] \\
 &\geq \frac{1}{4 \sin \gamma_i} \left[0 - \frac{\cos \gamma_i}{2} \bar{\eta}^2 \right] \\
 &= -\frac{\cos \gamma_i}{8 \sin \gamma_i} \bar{\eta}^2.
 \end{aligned}
 \tag{20}$$

Therefore

$$B \geq -\sum_i \frac{\cos \gamma_i}{8 \sin \gamma_i} \bar{\eta}^2 > -\frac{n \bar{\eta}^2}{8 \sin \gamma_{\min}} > -\frac{n \bar{\eta}^2}{4 \sin \gamma_{\min}}.
 \tag{21}$$

Combining the upper and lower bounds of B , we get

$$|B| < \frac{n \bar{\eta}^2}{4 \sin \gamma_{\min}}.
 \tag{22}$$

Analogously, we find the same bounds for C . That gives

$$\left| \frac{B+C}{2} \right| \leq \frac{n \bar{\eta}^2}{4 \sin \gamma_{\min}}, \quad \left| \frac{B-C}{2} \right| \leq \frac{n \bar{\eta}^2}{4 \sin \gamma_{\min}}.
 \tag{23}$$

Substituting this result into (17) yields

$$\left| 2\pi - \sum_i \gamma_i - S_p k_G \right| \leq \frac{n \bar{\eta}^2}{4 \sin \gamma_{\min}} [(k_M - k_m)^2 + |k_M^2 - k_m^2|] + o(\bar{\eta}^2).
 \tag{24}$$

Since $S_p > 0$, we can normalize (24) with S_p . It follows that

$$\left| \frac{2\pi - \sum_i \gamma_i}{S_p} - k_G \right| \leq \frac{\bar{\eta}^2}{S_p} \frac{n}{4 \sin \gamma_{\min}} [(k_M - k_m)^2 + |k_M^2 - k_m^2|] + o(1).
 \tag{25}$$

We are left with the task of determining $\bar{\eta}^2/S_p$. For this purpose, we use (5) to find a lower bound of S_p . We have

$$\begin{aligned}
 \cot \beta_i + \cot \alpha_i &= \cot \beta_i + \cot(\pi - \beta_i - \gamma_i) = \cot \beta_i - \cot(\beta_i + \gamma_i) \\
 &\geq \cot \beta_i - \cot(\beta_i + \gamma_{\min}).
 \end{aligned}
 \tag{26}$$

It follows from easy calculations that the right-hand side of (26) is minimal for $\beta_i = \cot^{-1}\left(\frac{1 - \cos \gamma_{\min}}{\sin \gamma_{\min}}\right)$, and therefore,

$$\begin{aligned}
 \cot \beta_i + \cot \alpha_i &\geq \left(\frac{1 - \cos \gamma_{\min}}{\sin \gamma_{\min}}\right) - \cot\left(\cot^{-1}\left(\frac{1 - \cos \gamma_{\min}}{\sin \gamma_{\min}}\right) + \gamma_{\min}\right) \\
 &=: \mathcal{D} > 0.
 \end{aligned}
 \tag{27}$$

Substituting (27) into (5) yields

$$S_p = \sum_i \frac{1}{8} \eta_i^2 (\cot \beta_i + \cot \alpha_{i-1}) \geq \sum_i \frac{1}{8} \eta_i^2 \mathcal{D}.
 \tag{28}$$

We can estimate $\bar{\eta}^2/S_p$ as follows:

$$\frac{\bar{\eta}^2}{S_p} \leq \frac{8 \bar{\eta}^2}{\sum_i \eta_i^2} \mathcal{D}^{-1} \leq \frac{8}{n} \eta_2^2 \mathcal{D}^{-1}. \tag{29}$$

Combining (29) with (25), we obtain

$$\left| \frac{2\pi - \sum_i \gamma_i}{S_p} - k_G \right| \leq \frac{2 \eta_2^2 \mathcal{D}^{-1}}{\sin \gamma_{min}} [(k_M - k_m)^2 + |k_M^2 - k_m^2|] + o(1). \tag{30}$$

Set $c = \frac{2 \eta_2^2 \mathcal{D}^{-1}}{\sin \gamma_{min}}$. Obviously, Equation (16) follows from (30) for $k_M = k_m$. Since $o(1)$ is bounded, we can find a constant $\mathcal{C} > c$ such that (15) is given for $k_M \neq k_m$. This completes the proof. \square

4.3. Triangles with Preconditioned Edge Lengths

While assuming that the angles of the Euclidean triangles spanned by $\{p_i p p_{i+1}\}$ are acute, we make sure that $S_p > 0$. In the same manner, we formulate preconditions on the distances η_i to achieve positive summands of S_p , and hence, $S_p > 0$.

Proposition 4. Let S_p be as defined above. Write $\bar{\eta} = \sup_i \eta_i$ and $\underline{\eta} = \inf_i \eta_i$, and suppose that:

1. There exists a positive constant γ_{min} such that $0 < \gamma_{min} \leq \gamma_i < \pi$ for all i .
2. There exist positive constants η_1 and η_2 such that $0 < \eta_1 \leq \bar{\eta}/\underline{\eta} \leq \eta_2$ for all i .

If $\eta_2 < \frac{(1+\sin \gamma_{min})}{\cos \gamma_{min}}$ or $\gamma_{min} \geq \pi/2$, then $S_p > 0$.

Proof. The basic idea of the proof is to determine conditions on the distances η_i such that the terms $S_{p_i} := \frac{1}{4 \sin \gamma_i} [\eta_i \eta_{i+1} - \frac{\cos \gamma_i}{2} (\eta_i^2 + \eta_{i+1}^2)]$ are greater than zero. If S_{p_i} is greater than zero for all i , then $S_p = \sum_i S_{p_i}$ is greater than zero.

First, we consider the case that $\gamma_{min} < \pi/2$, i.e., $\cos \gamma_{min} > 0$. It follows by simple analysis that $S_{p_i} > 0$ for $\eta_{i+1} \frac{(1-\sin \gamma_i)}{\cos \gamma_i} < \eta_i < \eta_{i+1} \frac{(1+\sin \gamma_i)}{\cos \gamma_i}$. We generalize this condition by demanding that $\bar{\eta} \frac{(1-\sin \gamma_{min})}{\cos \gamma_{min}} < \eta_i < \underline{\eta} \frac{(1+\sin \gamma_{min})}{\cos \gamma_{min}}$ for all i . Hence, $\bar{\eta} \frac{(1-\sin \gamma_{min})}{\cos \gamma_{min}} < \underline{\eta}$ and $\bar{\eta} < \underline{\eta} \frac{(1+\sin \gamma_{min})}{\cos \gamma_{min}}$. By rearranging the terms, we get $\bar{\eta}/\underline{\eta} < \frac{(1+\sin \gamma_{min})}{\cos \gamma_{min}}$. In the case $\gamma_{min} \geq \pi/2$, we have $\cos \gamma_{min} \leq 0$. Hence, it is easily seen that S_{p_i} must be positive. This completes the proof. \square

In the next theorem, we establish the upper bound of the normalized angular defect for data points with preconditioned distances.

Theorem 2. Let T_m be a sequence of meshes on a smooth surface with p as a common vertex. Consider the one-ring around p . Let $\bar{\eta}_m = \sup_i \eta_{m_i}$, $\underline{\eta}_m = \inf_i \eta_{m_i}$. Suppose that:

1. There exists a positive constant γ_{min} such that $\forall i, \forall m, 0 < \gamma_{min} \leq \gamma_{m_i} \leq \pi$.
2. There exists a positive constant $\gamma'_{min} \in (0, \pi)$ such that $\forall i, \forall m, 0 < \sin \gamma'_{min} \leq \sin \gamma_{m_i}$.
3. There exist positive constants η_1 and η_2 such that $\forall m, 0 < \eta_1 \leq \bar{\eta}_m/\underline{\eta}_m \leq \eta_2$ and $\eta_2 < \frac{(1+\sin \gamma_{min})}{\cos \gamma_{min}}$, if $\gamma_{min} \leq \pi/2$.

For $k_M \neq k_m$, there exists a positive constant \mathcal{C} such that

$$\limsup_m \left| \frac{2\pi - \sum_i \gamma_{m_i}}{S_p} - k_G \right| \leq \mathcal{C} [(k_M - k_m)^2 + |k_M^2 - k_m^2|]. \tag{31}$$

\mathcal{C} depends on the angle γ_{min} and the length ratio η_2 , which are constant and given by the sequence of meshes.

For $k_M = k_m$, it is

$$\limsup_m \left| \frac{2\pi - \sum_i \gamma_{m_i}}{S_p} - k_G \right| \leq o(1). \tag{32}$$

Proof. The proof follows the same line as the proof of Theorem 1. Again, we consider a particular mesh in the sequence and omit its index m . First, we can estimate $|2\pi - \sum_i \gamma_i - S_p k_G|$ as in (17). By determining the upper and lower bounds of B , we have to take into account that $\cos \gamma_i$ is not necessarily positive.

$$\begin{aligned}
 B_i &= \frac{1}{4 \sin \gamma_i} \left[\eta_i \eta_{i+1} c_i^2 c_{i+1}^2 - \frac{\cos \gamma_i}{2} (\eta_i^2 c_i^4 + \eta_{i+1}^2 c_{i+1}^4) \right] \\
 &\leq \frac{1}{4 \sin \gamma_i} \left[\bar{\eta}^2 + \frac{1}{2} (2 \bar{\eta}^2) \right] \\
 &= \frac{\bar{\eta}^2}{2 \sin \gamma_i}.
 \end{aligned}
 \tag{33}$$

This yields

$$B = \sum_i B_i \leq \sum_i \frac{\bar{\eta}^2}{2 \sin \gamma_i} \leq \frac{n \bar{\eta}^2}{2 \sin \gamma'_{min}}.
 \tag{34}$$

In the same manner, we find the lower bound of B .

$$\begin{aligned}
 B_i &= \frac{1}{4 \sin \gamma_i} \left[\eta_i \eta_{i+1} c_i^2 c_{i+1}^2 - \frac{\cos \gamma_i}{2} (\eta_i^2 c_i^4 + \eta_{i+1}^2 c_{i+1}^4) \right] \\
 &= \frac{1}{4 \sin \gamma_i} \left[\eta_i \eta_{i+1} c_i^2 c_{i+1}^2 (1 - \cos \gamma_i) - \frac{\cos \gamma_i}{2} (\eta_i c_i^2 - \eta_{i+1} c_{i+1}^2)^2 \right] \\
 &\geq -\frac{\cos \gamma_i}{8 \sin \gamma_i} \bar{\eta}^2 \\
 &\geq -\frac{\bar{\eta}^2}{8 \sin \gamma_i}.
 \end{aligned}
 \tag{35}$$

Therefore,

$$B \geq -\frac{n \bar{\eta}^2}{8 \sin \gamma'_{min}} > \frac{n \bar{\eta}^2}{2 \sin \gamma'_{min}}.
 \tag{36}$$

Combining the inequalities (34) and (36), we get

$$|B| \leq \frac{n \bar{\eta}^2}{2 \sin \gamma'_{min}}.
 \tag{37}$$

Likewise, we get identical bounds for C . This gives

$$\left| \frac{B+C}{2} \right| \leq \frac{n \bar{\eta}^2}{2 \sin \gamma'_{min}}, \quad \left| \frac{B-C}{2} \right| \leq \frac{n \bar{\eta}^2}{2 \sin \gamma'_{min}}.
 \tag{38}$$

We proceed analogously to the proof of Theorem 1 by substituting this result in (17)

$$\begin{aligned}
 \left| 2\pi - \sum_i \gamma_i - S_p k_G \right| &\leq \left| \frac{B+C}{2} \right| (k_M - k_m)^2 + \left| \frac{B-C}{2} \right| |k_M^2 - k_m^2| + o(\bar{\eta}^2) \\
 &\leq \frac{n \bar{\eta}^2}{2 \sin \gamma'_{min}} [(k_M - k_m)^2 + |k_M^2 - k_m^2|] + o(\bar{\eta}^2).
 \end{aligned}
 \tag{39}$$

By Proposition 4, we know that S_p must be positive. Thus, normalizing (39) by S_p gives

$$\left| \frac{2\pi - \sum_i \gamma_i}{S_p} - k_G \right| \leq \frac{\bar{\eta}^2}{S_p} \frac{n}{2 \sin \gamma'_{min}} [(k_M - k_m)^2 + |k_M^2 - k_m^2|] + o(1).
 \tag{40}$$

As before, we are left with the task of determining $\bar{\eta}^2/S_p$. Therefore, we are looking for a lower bound of S_{p_i} . From easy calculations, it follows that S_p is minimal either for $\eta_i = \underline{\eta}$, $\eta_{i+1} = \underline{\eta}$ or for $\eta_i = \underline{\eta}$, $\eta_{i+1} = \bar{\eta}$. Let us compare these cases by analyzing the

respective differences of S_{p_i} . This way, we evaluate the conditions under which one of these cases S_{p_i} becomes minimal. Since $\eta > 0$, the expression

$$\begin{aligned}
 4 \sin \gamma_i (S_{p_i}(\underline{\eta}, \bar{\eta}) - S_{p_i}(\underline{\eta}, \underline{\eta})) &= \left(\underline{\eta} \bar{\eta} - \frac{\cos \gamma_i}{2} (\underline{\eta}^2 + \bar{\eta}^2) \right) - \left(\underline{\eta}^2 (1 - \cos \gamma_i) \right) \\
 &= \underline{\eta}^2 \left((\bar{\eta}/\underline{\eta} - 1)(1 - \cos \gamma_i) - \frac{\cos \gamma_i}{2} (\bar{\eta}/\underline{\eta} - 1)^2 \right) \quad (41) \\
 &= \underline{\eta}^2 \left(-\frac{\cos \gamma_i}{2} (\bar{\eta}/\underline{\eta})^2 + (\bar{\eta}/\underline{\eta}) - \left(1 - \frac{\cos \gamma_i}{2} \right) \right)
 \end{aligned}$$

is zero if and only if $(\bar{\eta}/\underline{\eta})$ is equal to 1 (i.e., $\bar{\eta} = \underline{\eta}$) or $\frac{2 - \cos \gamma_i}{\cos \gamma_i}$. Moreover, the derivative of (41) with respect to $(\bar{\eta}/\underline{\eta})$ is positive for $(\bar{\eta}/\underline{\eta}) = 1$ and negative for $(\bar{\eta}/\underline{\eta}) = \frac{2 - \cos \gamma_i}{\cos \gamma_i}$. From this, we get a lower bound for S_{p_i} and, subsequently, for S_p .

$$S_p \geq \begin{cases} \frac{n}{4 \sin \gamma_{\min}} \left(\underline{\eta} \bar{\eta} - \frac{\cos \gamma_{\min}}{2} (\underline{\eta}^2 + \bar{\eta}^2) \right) & \text{if } \gamma_{\min} < \frac{\pi}{2} \text{ and } (\bar{\eta}/\underline{\eta}) > \frac{2 - \cos \gamma_{\min}}{\cos \gamma_{\min}} \\ \frac{n \underline{\eta}^2}{4 \sin \gamma_{\min}} (1 - \cos \gamma_{\min}) & \text{otherwise} \end{cases} \quad (42)$$

Substituting (42) into (40) gives

$$\left| \frac{2\pi - \sum_i \gamma_i}{S_p} - K \right| \leq c [(k_M - k_m)^2 + |k_M^2 - k_m^2|] + o(1), \quad (43)$$

with

$$c = \begin{cases} 2 \frac{\bar{\eta}^2}{\underline{\eta}^2} \frac{\sin \gamma_{\min}}{\sin \gamma'_{\min}} \left(\frac{\bar{\eta}}{\underline{\eta}} - \frac{\cos \gamma_{\min}}{2} \left(1 - \frac{\bar{\eta}^2}{\underline{\eta}^2} \right) \right)^{-1} & \text{if } \gamma_{\min} < \frac{\pi}{2} \text{ and } (\bar{\eta}/\underline{\eta}) > \frac{2 - \cos \gamma_{\min}}{\cos \gamma_{\min}} \\ 2 \frac{\bar{\eta}^2}{\underline{\eta}^2} \frac{\sin \gamma_{\min}}{\sin \gamma'_{\min}} (1 - \cos \gamma_{\min})^{-1} & \text{otherwise} \end{cases} \quad (44)$$

Now, we proceed analogously to the proof of Theorem 1. \square

4.4. Sphere

In Sections 4.2 and 4.3, we provided a convergence speed of the Gauss–Bonnet scheme for arbitrary smooth surfaces. Now, we alter the above theory for locally spherical surfaces, i.e., $k_M = k_m$, and estimate a faster convergence speed. Therefore, we first have to revise the propositions in Section 4.1 for this special case.

Theorem 3. *Let S be a smooth surface that is locally spherical in $p \in S$. Let T_m be a sequence of meshes on S with p as a common vertex. Consider the one-ring around p . Let $\bar{\eta}_m = \sup_i \eta_{m_i}$. If $S_{p_m} \neq 0$ for all m , then*

$$\limsup_m \left| \frac{2\pi - \sum_i \gamma_{m_i}}{S_{p_m}} - k_G \right| \leq o(\bar{\eta}). \quad (45)$$

Proof. First, we prove that

$$\tilde{\gamma}_i = \gamma_i + \frac{p(\eta_i, \eta_{i+1})}{\sin \gamma_i} - s(\eta_i, \eta_{i+1}) \cot \gamma_i + o(\bar{\eta}^3). \quad (46)$$

Therefore, we define a coordinate system such that p is placed in the origin and is identical to the north pole of the sphere. Let the one-ring neighbors p_i be placed on the northern hemisphere. Analogously to the proof of Proposition 2 in [6], we get the equality

$$\cos \gamma_i = \cos \theta_i \cos \theta_{i+1} \cos \tilde{\gamma}_i + \sin \theta_i \sin \theta_{i+1}, \quad (47)$$

through comparison of the expressions of the dot product $\mathbf{pp}_i \cdot \mathbf{pp}_{i+1}$ in spherical coordinates. Since $\Pi_i \cap S$ is a plane curve, we can apply Proposition 1 to express θ_i as a function of η_i . For a sphere, $\nu_i = f_i'''(0)$ is zero, and hence,

$$\theta_i = \frac{k_i \eta_i}{2} + o(\eta_i^2). \tag{48}$$

Substituting (48) into the series expansion of sine and cosine yields

$$\cos \theta_i = 1 - \frac{\lambda_i^2 \eta_i^2}{8} + o(\eta_i^3), \tag{49}$$

$$\sin \theta_i = \frac{\lambda_i \eta_i}{2} + o(\eta_i^2). \tag{50}$$

Thus, we can rewrite (47) as

$$\cos \gamma_i = \cos \tilde{\gamma}_i(1 - s(\eta_i, \eta_{i+1})) + p(\eta_i, \eta_{i+1}) + o(\bar{\eta}^3). \tag{51}$$

Applying the same arguments as the authors in [6] gives (46). We proceed to insert (46) into the left-hand side of (14) and get, again analogously to the proof in [6],

$$2\pi - \sum_i \gamma_i = (Ak_G + Bk_M^2 + Ck_m^2) + o(\bar{\eta}^3). \tag{52}$$

Since we are dealing with a locally spherical surface, we have $k_M^2 = k_m^2 = k_G$. Hence, with $S_p = A + B + C$, we get

$$\begin{aligned} \left| 2\pi - \sum_i \gamma_i - S_p k_G \right| &= \left| B(k_M^2 - k_G) + C(k_m^2 - k_G) \right| + o(\bar{\eta}^3) \\ &= o(\bar{\eta}^3). \end{aligned} \tag{53}$$

Dividing (53) through S_p yields (45), which proves the theorem. \square

4.5. Counterexample

In the above analysis, we formulated conditions on the mesh for a convergence of the Gauss–Bonnet scheme. When applying this method, we divide the angular defect by the Voronoi region S_p of point p . Hence, S_p must not become zero.

Here, we construct an example showing that the scheme fails when the conditions are not fulfilled. Let $p_{i;i=1,\dots,6}$ be six one-ring neighbors of p spanning Euclidean triangles with identical angles in p and alternating lengths, i.e., $\gamma_i = 2 \tan^{-1}(1/3)$ for all $i \in \{1, \dots, 6\}$, $\frac{\eta_i}{\eta_{i+1}} = 2$ for $i \in \{1, 3, 5\}$, and $\eta_i = \eta_{i+2}$ for all $i \in \{1, \dots, 6\}$. This example does not fulfill the third condition of Theorem 2, since $\frac{\sup_i \eta_i}{\inf_i \eta_i} = 2 \not\leq 2 = \frac{1 + \sin(\gamma_{min})}{\cos(\gamma_{min})}$. Furthermore, the angles of the spanned Euclidean triangles in the neighbor points of the short edges, i.e., $p_{i;i=2,4,6}$, are not acute, and thus contradict the first condition of Theorem 1. Inserting these numbers into (3), we get $S_p = 0$. Hence, the scheme does not converge.

5. Conclusions

In this work, we derived necessary conditions for the convergence of the Gauss–Bonnet scheme for an arbitrary mesh of data points of a smooth surface. Under these conditions, we proved a linear convergence speed in general and quadratic convergence speed in the special case of locally spherical surfaces. We also showed that the Gauss–Bonnet scheme does not always provide an accurate estimate of the Gaussian curvature. The scheme can even diverge if the conditions are not satisfied. Thus, the Gauss–Bonnet scheme should be used for estimating the Gaussian curvature at a vertex only when one

can control the mesh. In particular, it is necessary to guarantee that the Voronoi region of the vertex does not become zero.

In our analysis, we did not consider the vertex points to be erroneous due to sensing noises [5,12]. However, we think that an error analysis for noisy data is possible with the methods presented above.

Funding: The author gratefully acknowledges support by the Deutsches Zentrum für Luft- und Raumfahrt (DLR) with funding from the Bundesministerium für Wirtschaft und Technologie (FKZ 500Q1801). Furthermore, the author gratefully acknowledges the funding of the Clusters of Excellence PhoenixD (EXC-2122, Project ID 390833453) and Quantum Frontiers (EXC-2123, Project ID 390837967) funded by the Deutsche Forschungsgemeinschaft (DFG, German Research Foundation) under Germany's Excellence Strategy.

Acknowledgments: The work presented here builds on the author's master thesis submitted in 2017 at the Friedrich Schiller University Jena. Therefore, the author would like to thank Gerhard Zumbusch and Joachim Giesen for their supervision and useful discussions.

Conflicts of Interest: The author declares no conflict of interest.

References

1. Magid, E.; Soldea, O.; Rivlin, E. A comparison of Gaussian and mean curvature estimation methods on triangular meshes of range image data. *Comput. Vis. Image Underst.* **2007**, *107*, 139–159.
2. Surazhsky, T.; Magid, E.; Soldea, O.; Elber, G.; Rivlin, E. A comparison of Gaussian and mean curvature estimation methods on triangular meshes. In Proceedings of the 2003 IEEE International Conference on Robotics and Automation, Taipei, Taiwan, 14–19 September 2003; Volume 1, pp. 1021–1026.
3. Watanabe, K.; Belyaev, A. Detection of salient curvature features on polygonal surfaces. *Eurographics* **2001**, *20*, 53, doi:10.1111/1467-8659.00531.
4. Taubin, G. A signal processing approach to fair surface design. *Comput. Graph.* **1995**, *29*, 351–358.
5. Gatzke, T.D.; Grimm, C.M. Estimating curvature on triangular meshes. *Int. J. Shape Model.* **2006**, *12*, 1–28.
6. Borrelli, V.; Cazals, F.; Morvan, J.M. On the angular defect on triangulations and the pointwise approximation of curvatures. *Comput. Aided Geom. Des.* **2003**, *20*, 319–341.
7. Meek, D.S.; Walton, D.J. On surface normal and Gaussian curvature approximations given data sampled from a smooth surface. *Comput. Aided Geom. Des.* **2000**, *17*, 521–543.
8. Xu, G. Convergence analysis of a discretization scheme for Gaussian curvature over triangular surfaces. *Comput. Aided Geom. Des.* **2006**, *23*, 193–207.
9. Xu, Z.; Xu, G. Discrete schemes for Gaussian curvature and their convergence. *Comput. Math. Appl.* **2009**, *57*, 1187–1195.
10. Do Carmo, M.P. *Differential Geometry of Curves and Surfaces*; Prentice-Hall, Inc.: Englewood Cliffs, NJ, USA, 1976.
11. Meyer, M.; Desbrun, M.; Schröder, P.; Barr, A.H. Discrete differential-geometry operators for triangulated 2-manifolds. In *Visualization and Mathematics III*; Springer: Berlin/Heidelberg, Germany, 2003; pp. 35–57.
12. Pottmann, H.; Wallner, J.; Huang, Q.X.; Yang, Y.L. Integral invariants for robust geometry processing. *Comput. Aided Geom. Des.* **2009**, *26*, 37–60.